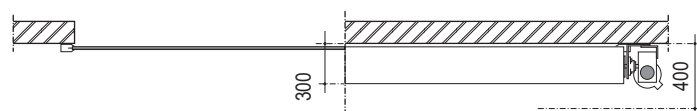


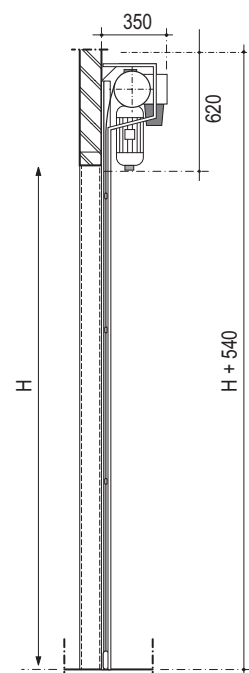
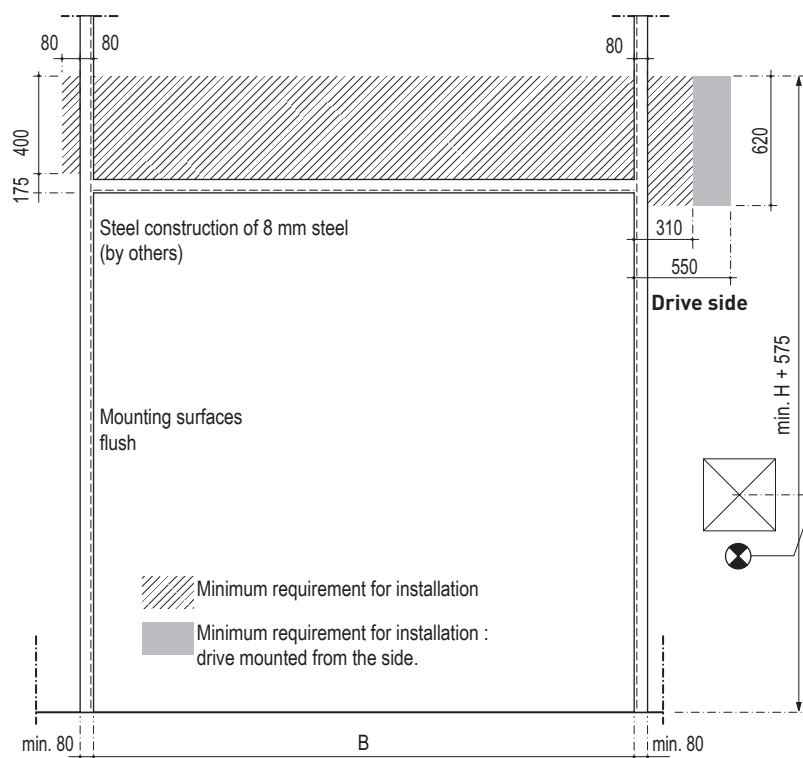
Front view



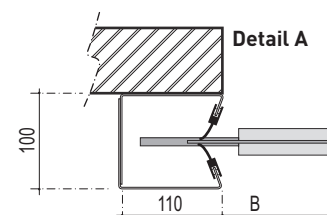
Section A

Section B

Minimum requirement
for installation



Side view



Novo Speed Polara

- Control box with contactors :
 - ☐ CEE-form 3-N PE 400V/50Hz/16A
- Control box with frequency inverter :
 - ☐ in case of 1,2 mm panel and $W \times H < 16 \text{ m}^2$
CEE-form 1x230V/50Hz/T16A
 - ☐ in case of 1,2 mm panel and $W \times H \geq 16 \text{ m}^2$
or in case of 3 mm panel
3-N PE 400V/50Hz/T16A
- ☐ Electrical supply by others
 - ☐ control box/ power supply, inside RIGHT
 - ☐ control box/ power supply, inside LEFT

Installation requirements

