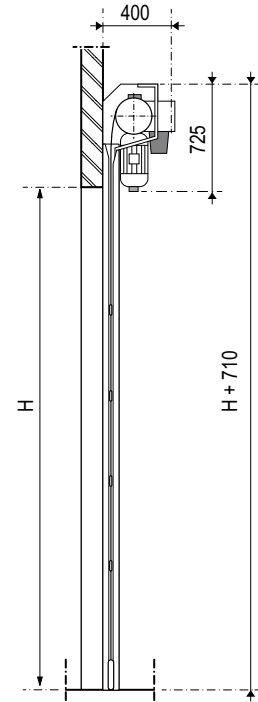
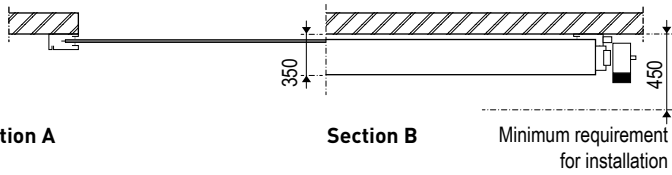


Front view

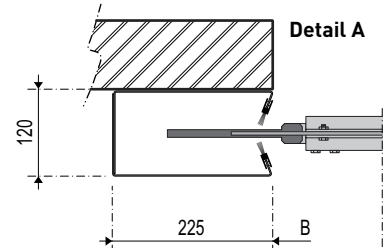


Side view

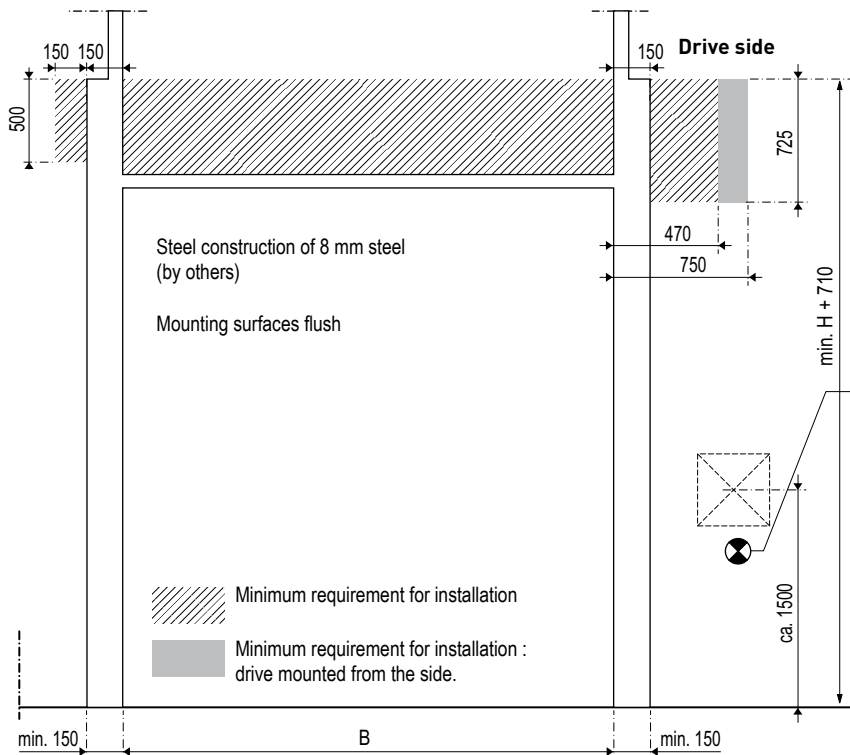


Section A

Section B



Detail A



Installation requirements

INDOOR

Control box with contactors :

CEE-form 3-N PE 400V/50Hz/16A

Control box with frequency inverter :

CEE-form 3-N PE 400V/50Hz/T16A

OUTDOOR

Always :

CEE-form 3-N PE 400V/50Hz/T16A

Electrical supply by others

control box/ power supply, inside RIGHT

control box/ power supply, inside LEFT