



Intelligent Door Solutions



CORPORATE BROCHURE

Novoferm is a trusted leader in high-performance steel and aluminium door solutions, designed to meet the demands of modern commercial, industrial, and public-sector environments.



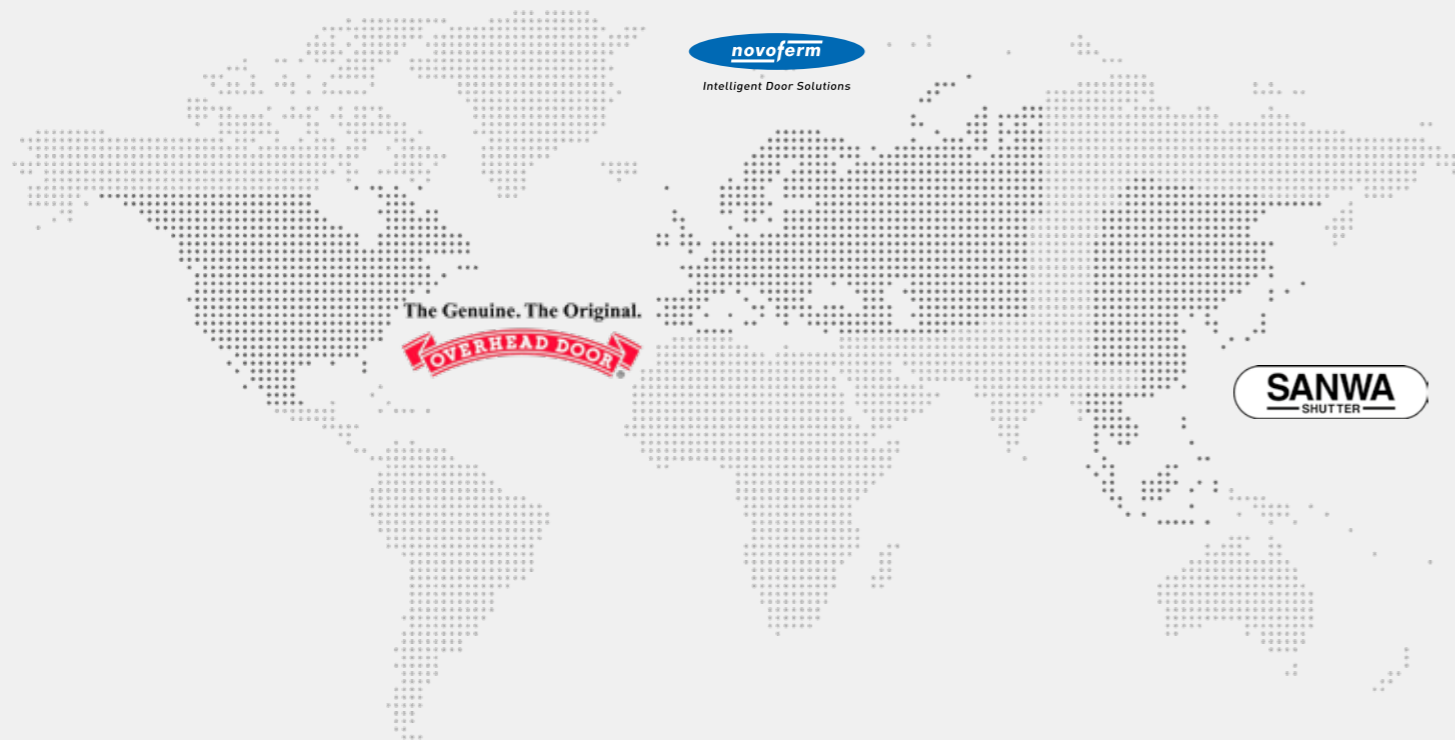
ABOUT US

Novoferm is one of Europe's leading manufacturer of industrial, domestic and commercial door solutions and is part of the Sanwa Group, a world leading manufacturer of entrance systems, supplying high quality, reliable and innovative products, through a global network of **107 Companies** and thousands of Approved Distribution Partners.

Founded **over 70 years** ago, now with annual sales in **over 60 countries** totalling more than **€5 billion** and with around 9,000 employees, Sanwa Group provides

everything from **garage doors, industrial doors, door and gate automation systems, roller shutters, shop front entrances**, as well as **steel hinged doors and frames for fire protection, security and personal access.**

At Novoferm, we are passionate about providing architects, construction companies and building owners around the world with products that guarantee safety, security and convenience – in their **homes, in their workplaces, their hospitals, schools, offices, airports and shops.**



CONTENTS

Novoferm Door Solutions

| | |
|-----------------------------------|----|
| Dock Levellers | 04 |
| Dock Shelters | 05 |
| Accessories | 06 |
| High Speed Industrial Doors | 08 |
| Sectional ISO 40 Industrial Doors | 10 |
| Roller Shutter Industrial Doors | 12 |
| Sectional Doors | 14 |
| Roller Doors | 16 |
| Steel Up & Over Doors | 18 |
| Steel Side Hinged Doors | 20 |

Horton Door Solutions

| | |
|-----------------------------|----|
| 2021 + Thermal Sliding Door | 30 |
| Proslide® 360 Sliding Door | 32 |
| PAS24 Sliding Door | 33 |
| Folding Access® Swing Door | 34 |
| 4100 - Plus Swing Door | 35 |

Robust Door Solutions

| | |
|---------------|----|
| OUTA-DOR | 23 |
| INNA-DOR | 24 |
| SECUR-DOR 2.1 | 25 |
| TUFF-DOR 2.1 | 26 |
| TUFF-VENT | 27 |
| GLAS-DOR | 28 |
| TEMP-DOR | 28 |
| RISER-DOR | 29 |

BGS Door & Entry Solutions

| | |
|----------|----|
| Services | 36 |
|----------|----|

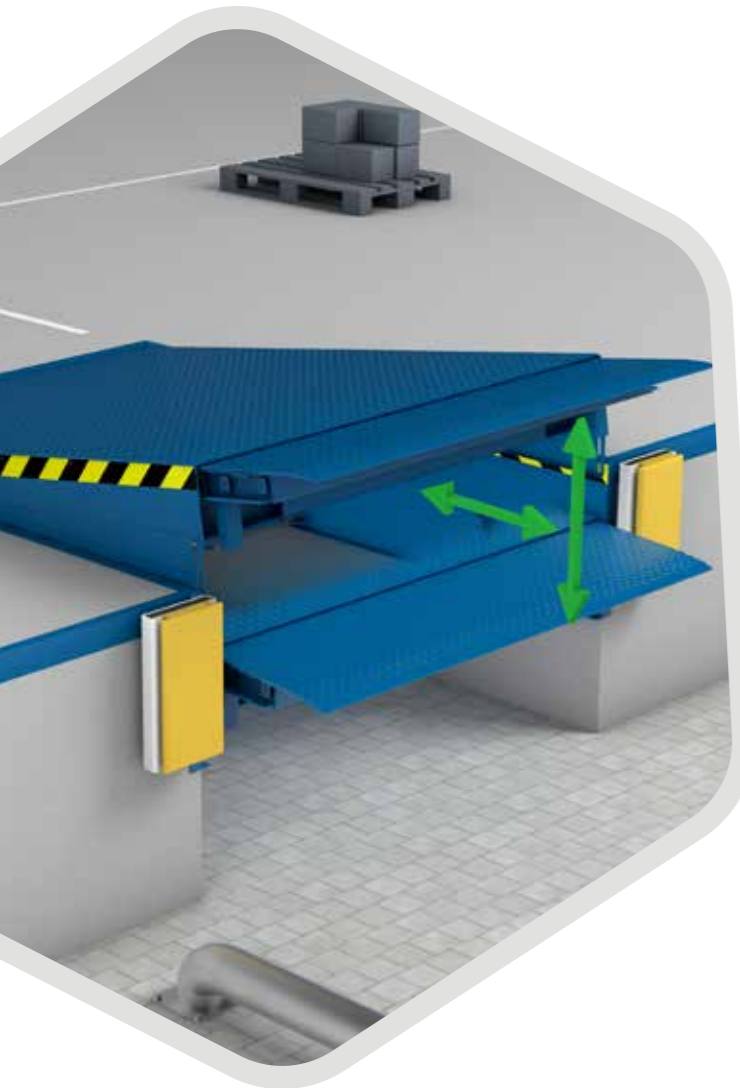


Novoferm UK
Manufacturer and supplier of high-quality garage doors, industrial doors, and loading systems, serving residential, commercial, and industrial markets.

Robust
Manufacturer specialising in high quality, custom-made hinged steel door solutions, offering a wide range of third party certified products for industrial and commercial applications.

BGS
Industrial door and access solutions specialists that provides end-to-end support, from scheduled maintenance and responsible repairs to new installations and manual upgrades.

Horton
Manufacturer and installer of automatic, pedestrian & specialist door systems.



TELESCOPIC LIP DOCK LEVELLERS

Hydraulic dock leveller with telescopic lip performance is optimised for the increased market requirements and combines the benefits of various systems.

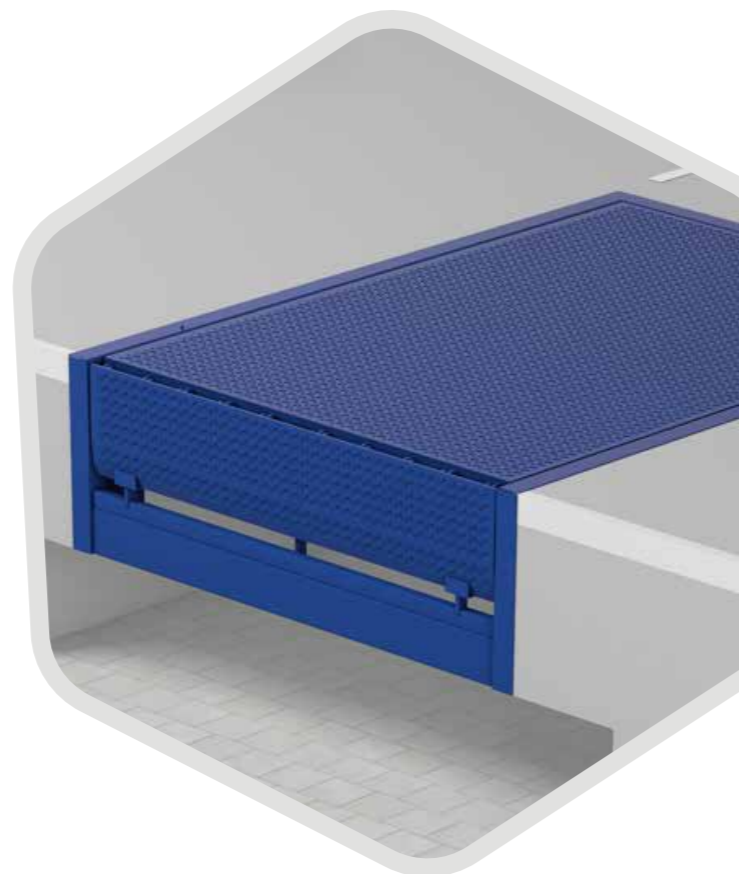
The hydraulic dock leveller with telescopic lip is particularly robust and enables efficient loading thanks to its modern control unit technology and drive system. It also offers the simplest and most efficient operation with the lowest energy consumption.

Advantages

- SLOD function prevents accidents
- Carry Weight Capacity: 60kN, 80kN, 100kN
- Up to 70% less energy consumption
- Robust steel construction
- Quick installation thanks to the Z-frame
- Digital connection via app and live monitoring

HINGED LIP DOCK LEVELLERS

Hydraulic dock levellers with a hinged lip have become established as the basic version in the loading technology sector. Their performance redefines this standard. It combines years of experience, a robust steel structure and state-of-the-art control unit technology.



INFLATABLE DOCK SHELTERS

As part of the integrated loading solution, our inflated dock shelter is automatically actuated.

After actuating the door OPEN switch, the bellows are first inflated, and then the door opens automatically. At the end of the loading process, the dock leveller is first driven into resting position with the AutoDock function, then the door is closed, a possibly connected loading lamp is switched off, the dock shelter is vented, and an exterior traffic light switches to green.

This automatic sequence increases efficiency, saves energy costs, and prevents possible damage caused by removing the lorry too early while the bellows are still inflated.

Advantages

- Bellows made from PVC
- Perfect sealing
- Energy-saving
- Twin motors for fast and safe inflating
- Integrated elements of the loading solution



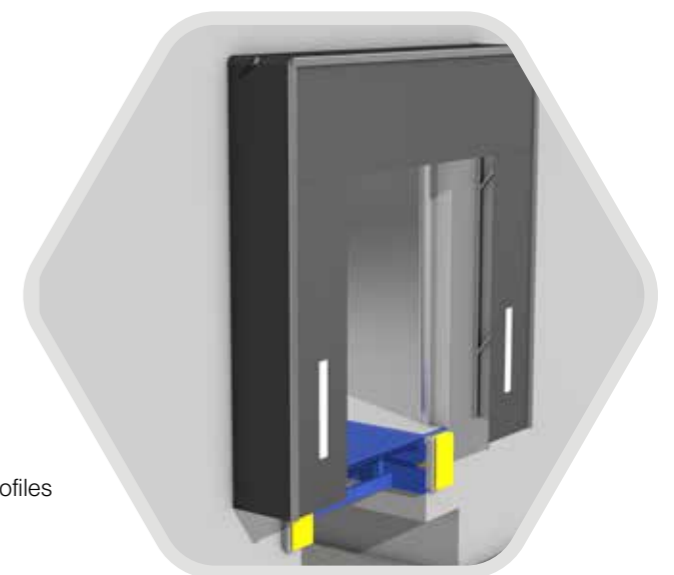
ALUMINIUM DOCK SHELTERS

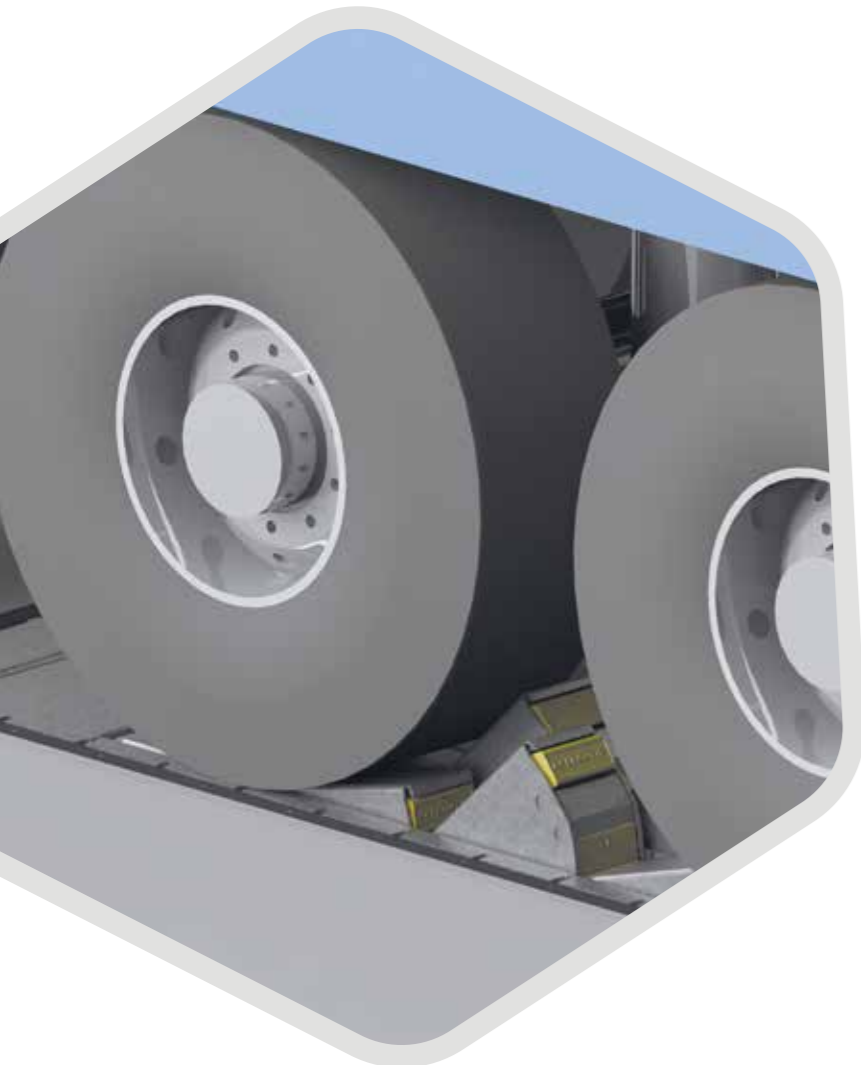
The all-purpose aluminium dock shelter forms the perfect connection point between lorry and warehouse. Its flexible frame construction of aluminium profiles largely prevents incorrectly approaching lorries from damaging the seal. Since there are no screws on the front, lorries will also survive any accidental collisions without damage.

White markings for the approach further help lorry drivers orient themselves when manoeuvring. In addition, the seal effectively protects against draughts, wind and rain, and thus prevents energy loss.

Advantages

- Internal rain drain
- Spring-back frame
- Flexible roof construction Frame construction with aluminium profiles
- Articulated arms made of galvanised steel
- Universally applicable





CALEMATIC

HGV restraint systems sustainably reduce the risk of accidents at the loading bay.

The Calematic System is designed in such a manner that it can be used everywhere: in new constructions as well as at existing loading bays. Thanks to the flat installation recessed in the courtyard ground, damage to the vehicle is avoided when manoeuvring.

The system is easy to clean and contamination will not lead to failure. Calematic can be used under all weather conditions.

Advantages

- Easy operation and handling
- Facilitates safe and easy docking of the truck
- No obstructive fittings that can interfere or become damaged
- No functional problems, even with modern trucks
- Extremely low maintenance costs
Component of the overall loading solution, including door and dock leveller



LOADING LAMPS

When loading and unloading the docked lorry, a dark zone is inevitably created in the loading area, which makes it difficult to handle goods quickly and safely at the lorry-ramp interface.

The LED dock light HIGH PERFORMANCE LED and the particularly robust HEAVY DUTY LED dock light are the ideal solution for optimum illumination of the loading zone and lorry loading area.

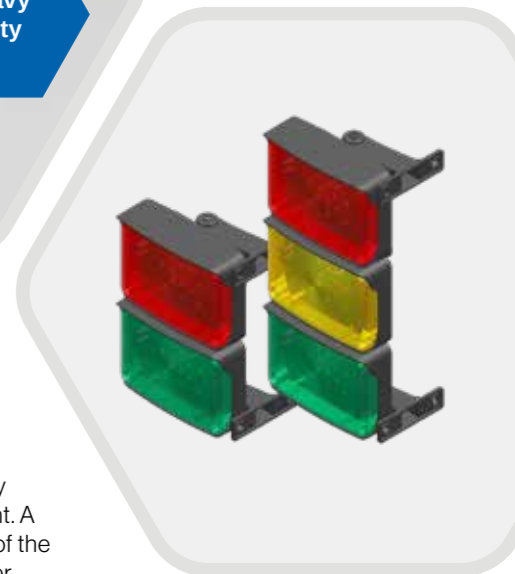
Advantages

- Suitable for all Novoferm dock levellers
- LED traffic lights reduce energy costs and CO₂ emissions



TRAFFIC LIGHTS

Traffic lights offer optimum safety for processes at the loading point. A visual display signals the status of the loading process to the lorry driver.



BUMPER SYSTEMS



RUBBER BUMPERS

Rubber impact bumper

- High-quality new rubber compound
- Especially abrasive-resistant and hard wearing
- Spring deflection up to 20 mm



NOVOLIFT

Height-adjustable buffers

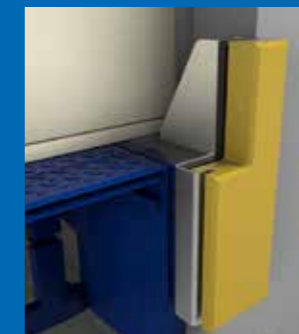
- No limitations when loading swap bodies
- Multiple use 2D
- Length of stroke 250 mm
- Lasts 7-10x longer than rubber
- Suitable for high loading frequency



NOVOSLIDER

The unique design

- Nyltrex high-performance plastic in signal yellow
- Height-adjustable front part
- Spring deflection up to 25 mm
- Lasts 7-10x longer than rubber



NOVOSLIDER L

No limitations when loading swap bodies

- Nyltrex high-performance plastic in signal yellow
- Height-adjustable front part
- Spring deflection up to 25 mm
- Lasts 7-10x longer than rubber
- Suitable for high loading frequency

HIGH SPEED DOORS

for indoor use



High speed doors for indoor use are designed to be mounted inside a building. This can be in a passageway between rooms or on the inside of an exterior wall. Which door is most suitable for your situation depends on many factors. Firstly, the size and wind pressure in the passageway. Often, smaller spaces will have less wind pressure than between large halls or in an airlock

HIGH SPEED DOORS

for outdoor use



High speed doors for outdoor use are designed to be mounted on the facade of a building. This can be done on the inside, but also on the outside of the facade. Which door is most suitable for your situation depends on many factors. Firstly, the size and the wind pressure in the passageway.



Prime

Application

- Supermarkets
- Food industry
- Laboratories
- Light Industry

The quick, silent solution to draught.

The high speed door Prime is a good solution for medium-sized openings up to 12.25 m² and normal use. Ideal for the daily passage of people and light goods. The one-piece door curtain is extremely quiet and can be printed with any required imprint. High speed doors are used in many supermarkets because they are practical in use, save a lot of energy and improve the atmosphere in the shopping area with their beautiful, clear print.

Prime Advantages

- **Wind resistant** up to at least 3 Bft or even up to 7 Bft with WindLoad Optimiser. Class 0 according to EN12424.
- **Silent** the door curtain is manufactured in one piece and is therefore virtually noise-free.
- **Safe** equipped with a safety light curtain as standard, optionally with a soft FlexEdge bottom beam.
- **Robust** steel guide columns guide the door curtain made of polyester-reinforced plastic fabric.
- **Draught-free** the door curtain is sealed with sliding strips, the bottom beam has a rubber sealing profile.



NovoZip

Application

- Supermarkets
- Food industry
- Laboratories
- Light Industry
- Cleanrooms

Self-repairing rapid roll door.

The self-repairing high speed door NovoZip is the ideal solution for openings of up to 20.25 m² and intensive use. The self-repairing operation of the self-lubricating track reduces interruptions and ensures minimum delay in the production process. The NovoZip is intended as a fast, user-friendly room divider and provides very good draught exclusion and climate control. This results in significant energy savings.

NovoZip Advantages

- **Wind resistant** up to at least 11 Bft. Class 3 according to EN12424.
- **Self-repairing** the door curtain automatically returns into the columns after a collision.
- **Silent** the door curtain is manufactured in one piece and is therefore virtually noise-free.
- **Safe** equipped with a safety light curtain and a soft FlexEdge bottom beam as standard.
- **Robust** steel guide columns guide the door curtain made of polyester-reinforced plastic fabric.
- **Draught proof** the zip fastener technology ensures a good draught proofing, as does the rubber sealing.
- **Installation** in every passageway up to 20.25 m² in the building and on the inside of the external facade.



NovoZip Class 3

Application

- Supermarkets
- Food industry
- Laboratories
- Light Industry

Self-repairing rapid roll door.

The self-repairing high speed door NovoZip is the ideal solution for openings of up to 20.25 m² and intensive use. The self-repairing operation of the self-lubricating track reduces interruptions and ensures minimum delay in the production process. The NovoZip is intended as a fast, user-friendly room divider and provides very good draught exclusion and climate control. This results in significant energy savings.

NovoZip Class 3 Advantages

- **Wind resistant** up to at least 11 Bft. Class 3 according to EN12424.
- **Self-repairing** the door curtain automatically returns into the columns after a collision.
- **Silent** the door curtain is manufactured in one piece and is therefore virtually noise-free.
- **Safe** equipped with a safety light curtain and a soft FlexEdge bottom beam as standard.
- **Robust** steel guide columns guide the door curtain made of polyester-reinforced plastic fabric.
- **Draught proof** the zip fastener technology ensures a good draught proofing, as does the rubber sealing.
- **Installation** in every passageway up to 20.25 m² in the building and on the inside of the external facade.



NovoFold

Application

- Installation in the external wall (inside and outside)
- Supermarkets
- Food industry
- Laboratories
- Light Industry

Self-repairing rapid roll door.

The NovoFold folding door has been developed for intensive use in outdoor openings up to 36 m² in size. Ideal for the fast daily passage of forklift trucks and large goods. The door curtain is equipped with a large number of reinforcement profiles and a unique folding technique, as a result of which it remains extremely stable even under high wind pressure. The fully closed covers and the materials used make the NovoFold suitable for long-term use under all conditions.

NovoFold Advantages

- **Wind resistant** up to Class 5 according to EN 12424 at up to at least 13 Beaufort.
- **Solid** the guide columns and the drive are completely encased in watertight steel caps. This makes the NovoFold suitable for outside mounting.
- **Extreme** the unique folding construction and the materials used make the NovoFold extremely reliable and robust, even under harsh conditions. The NovoFold is not affected by high wind pressure, rain, dust, etc.
- **Safe** fitted as standard with Opto-sensors in the lower beam: As soon as the lower beam touches something, the door opens immediately. The door opening is secured with safety photocells.
- **Draught seal** the bottom beam has a soft rubber sealing profile, additional draught brushes are available as an option.
- **Outside** powder-coated in RAL 7011 as standard.

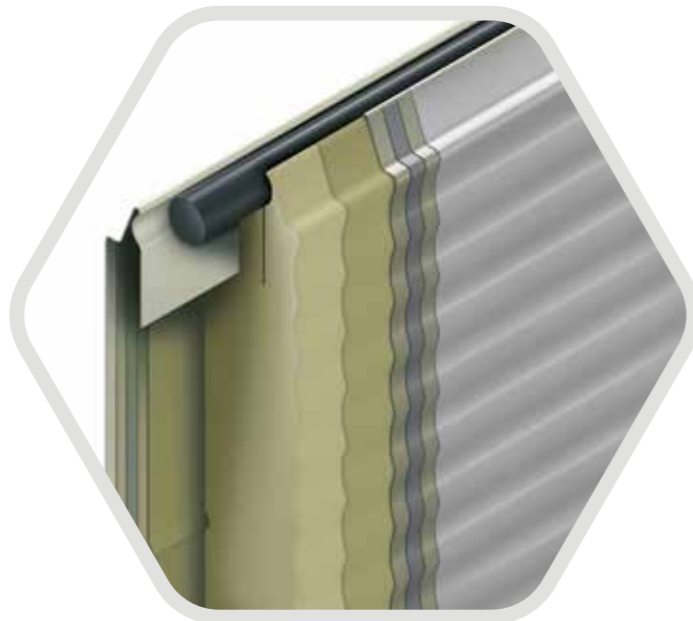
INDUSTRIAL ISO 40 SECTIONAL DOORS

ISO 40 mm sectional doors are engineered with cutting-edge technology to deliver exceptional durability and attention to detail. Metal or aluminium end caps, integrated reinforcement profiles, and concealed anodized aluminium sub-profiles ensure a robust construction and refined finish. The versatile manufacturing approach prioritises flexibility, resulting in a product that excels as a true all-rounder — balancing competitive pricing, high performance, and broad application possibilities.

The ISO 40 mm industrial sectional door, combines excellent heat-insulation and sound-absorbing properties with modern design.

Specification

| | |
|--------------------------|----------------------------------|
| Panel thickness | 40mm |
| Insulation value | U = 0,52 W/m²K |
| Specific density PU Foam | 40 kg/m³ |
| A Paint Layer | 19 standard colours (outside) |
| B Zinc coating | 275 g/m² |
| C Steel sheet | 0,5 mm |
| D Zinc coating | 275 g/m² |
| E Primer coating | |
| F PU high density foam | g = 40 kg/m³, CFK and H-CFK free |
| E Primer coating | |
| D Zinc coating | 275 g/m² |
| C Steel sheet | 0,5 mm |
| B Zinc coating | 275 g/m² |
| A Paint Layer | RAL 9002 (outside) |



DOOR STRUCTURE

ISO 40 External Lock
External lock for every situation. Depending on the panel thickness, the type of cylinder, and the desired locking position, an external lock can be customised to meet these specific requirements and preferences.

ISO 40 Wind Load
Depending on the door's width, Novoferm has reinforced it with specialised proles. These reinforcement proles ensure that the door meets all relevant regulations and standards regarding resistance to heavy wind loads.

ISO 40 Standard Frame
The connection between the door leaf and the vertical tracks in a standard corner frame ensures a strong, tight seal between the side of the door and the building. This design prevents gaps and enhances the overall durability and insulation of the door system.

ISO 40 Heavy-duty Frame
This frame is used for doors with dark colours to prevent the door from warping due to sun exposure. When heated by the sun, the door can bow outward, potentially impacting the upper lintel. The heavy corner frame effectively prevents this from happening, maintaining the door's structural integrity.

ISO 40 Floor Sealing

Connection Panels
The connection joint between the panels of ISO 40 doors is both wind and watertight, thanks to a foam rubber cord placed between the panels. This design ensures that the inner plate of the door remains separated from the outerplate, which contributes to optimal insulation.

INDUSTRIAL ROLLER SHUTTER DOORS

Industrial Roller Shutter Door can be customised for a wide range of users. When the time comes to invest in new doors, especially where space is tight and access is difficult, rolling doors are an excellent choice.

These doors are modern, robust and cost-effective, provide a thermal and noise protection.



Single-walled roller shutter doors

Single-walled roller shutter doors prove to be extremely robust and resistant to bending in everyday use.

The selection includes curved and straight profiles in different materials, surfaces and colour coatings as well as perforated profiles, window and grid profiles.



Double-walled roller shutter doors

We recommend our double-walled roller door profiles where requirements for smooth operation and insulating properties are higher.

Depending upon model, they are provided with polystyrene foam, mineral wool or filled with polyurethane foam in a modern production process and satisfy the highest demands for stability, resistance and safety. They are also available in different materials and colour coatings.



High speed roller shutter doors

The significantly reduced opening times of the high speed roller shutter doors not only ensure optimal operational processes, but also reduce heat losses through doors standing open.

A powerful microprocessor with inverter is available, providing smooth acceleration and soft braking to protect the materials as the door opens and closes. This allows the average opening speed to be increased up to 0.8 m/s, depending on the door height.



DOOR STRUCTURE

Industrial roller shutter doors are constructed from a small number of manageable components, which makes the assembly process fast and very economical.

The two **brackets** for the motor drive and the pedestal bearing are sized according to the weight of the roller shutter door and undergo testing according to the laws of static.

Statics is also used to determine the **diameter of the shaft** on the basis of the width and weight of the roller shutter. The circular blanks (two on each side) are expertly welded to the shaft pins.

The stability of the door under **wind load** is verified by a TÜV-certified program.

The galvanised steel **guide rails** have an integrated support, which can be enlarged with an extra rectangular profile.

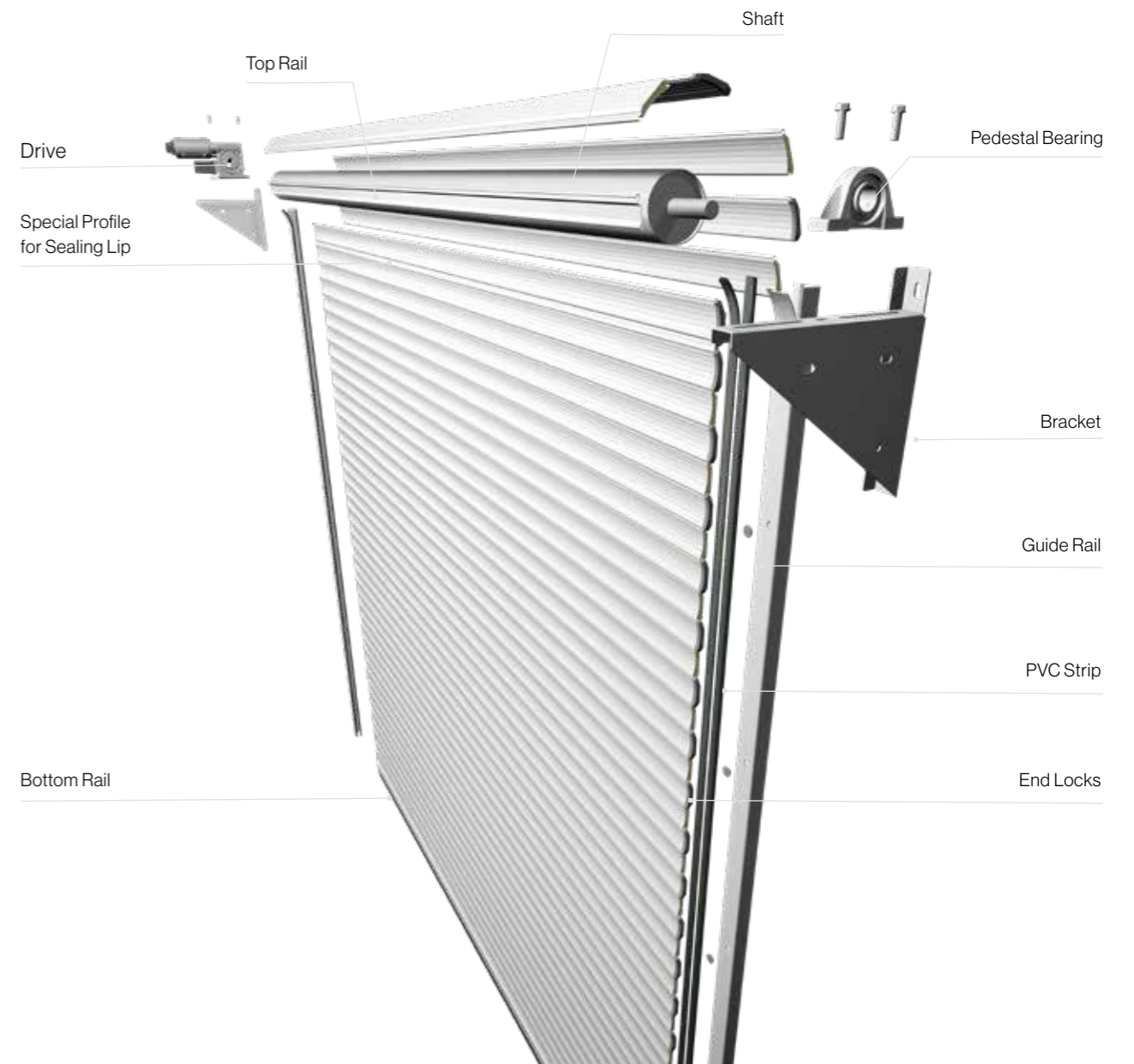
The pre-drilled fixing holes are closed with sealing caps. The stability of the guide rails can be further increased with **reinforced brackets**.

Adhesive **edgings** are used to reduce wear to the roller shutter profiles.

The roller shutter has a special profile to compress and EPDM **sealing lip** to the lintel.

The **endlocks** of the slats are usually riveted. If the doors is wider than 5750 mm, forged and hotdip galvanised **wind hooks** are also riveted on.

The **bottom rail** is made of extruded aluminium and designed to hold safety rubber bottom seal.



SECTIONAL GARAGE DOORS

A sectional garage door is made up of several horizontal panels (sections) that are hinged together. These doors open vertically and slide along tracks that curve and run parallel to the ceiling when fully opened.

A sectional "door" does not swing outwards, therefore you can use every last centimetre of the space in front of the garage, for example to park your car, as this door type assists to maximise your driveway space. As the sections are pushed under the ceiling to save space, there is also more room in the garage - ideal for tall vehicles such as off-road vehicles or vans.

With a Sectional door with an electric operator, you always have the full clearance height at your disposal. The use of the Novoport Speed, side mounted operator also assists with not taking up additional ceiling space.



White Aluminium
RAL 9006



Satin Black Composite
Shade



Chartwell Green
BS4800



Anthracite Grey
RAL 7016

Sectional Doors ISO 20/ 45 EVO

Advantages

Made To Measure | Space Efficient

Vertical lift mechanism allows full use of internal and external space with no outward swinging motion, ideal for installations with restricted space.

Thermal Performance

The sectional design offers superior insulation compared to traditional doors. Each panel is filled with high-density polyurethane foam to reduce thermal bridging and improve energy efficiency.

Security

Anti thief security features include rolling code technology, no lock to pick, built in emergency sensor to a self locking motor.


Exclusive to Novoferm : ISO 45 EVO

We are the exclusive supplier of the ISO 45 EVO.

- 45mm insulated panels with thermal break.
- Significantly improved heat insulation value for the section of $U(p)=0.46 \text{ W/m}^2\text{K}$ and up to 17% improved heat insulation for an installed door.
** With respect to door solutions with comparable section thickness.*
- Available in a range of finishes, RAL colours and glazing options.

Specification

| | |
|--------------------|--|
| Material | Steel & Polyurethane |
| Overall dimensions | Up to 5.50m wide |
| Insulation | 20 mm or 45 mm wide |
| Surface finish | Woodgrain Smooth surface Wood effect finishes Satin surface Microline |
| Door designs | 4 Designs: Horizontal Rib Large Rib Flush Panelled |
| Colours & finishes | 32 Attractively priced preferred colours: RAL colours of your choice 4 Wood finishes 6 Satin surfaces |

| | |
|-----------------|---|
| Glazing | V1 Plain clear V2 Rhombus V3 Cross clear V4D Diamond Leaded clear V4S Square leaded clear Sunrise glazing V7 Light strip V8 portholes V9 Square aluminium |
| Opening method | Manually operated (with handle) Electric (with operator) Electric (with app)  |
| Frames | Steel Frame |
| Security rating | TUV-tested burglar resistance |
| Certification | Compliant with ISO 9001 and the safety requirements of European garage door standard EN 13241 |

Roller Doors Novorol



Anthracite
Grey
RAL 7016



Anthracite
Grey
RAL 7016



Traffic
White
RAL 9016

ROLLER GARAGE DOORS

Roller garage doors are made of high-quality aluminium slats and are manufactured according to the roller shutter principle. This leaves the ceiling in the garage free and no swing space is required in front of the garage, so you can use every last centimetre of space, for example for parking a second car.

The Novorol insulated roller door combines a space saving design with the convenience of an electrically operated automatic door. The door lifts vertically and rolls into a box at the head of the garage door opening, providing more space in front of the garage.

Novorol takes the concept of the roller garage door to a new level. It out-performs the ordinary garage door for ease of use, insulation, finishes, safety and security plus all doors are manufactured under ISO 9001 quality guidelines.

With vibrant colours, elegant woodgrain finishes, and smarthome app compatibility, these doors combine style, convenience, and protection for your home.

Specification

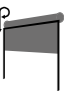
| | |
|--------------------|---|
| Material | Aluminium & Polyurethane |
| Overall dimensions | Up to 5m wide (Novorol 77) Up to 3m wide (Novorol 55) |
| Insulation | Low insulation |
| Surface finish | Smooth surface Laminated finish |
| Door designs | 77mm or 55mm slats |
| Colours & finishes | 22 Attractively priced preferred colours 2 High Grade Woodgrain Laminate Finishes |

Advantages

- Made to measure products.
- Automation as standard.
- Somfy Rolixio control unit provided as standard, with NR & Teleco units available upon request.
- Built in 100dB alarm as standard.
- Wired safety edge as standard. Wireless option available.
- Novoshield provided as standard.
- Anti theft features such as "rolling code" technology.
- Self locking motor.
- Maximum weather protection.
- Effortless control with remote access. Additional extras such as keypads also available.
- Smart home compatibility available.

Improved Insulation

Insulation is a crucial factor when selecting garage doors, as it can impact the energy efficiency of your home. Roller garage doors are well-insulated, trapping warm air inside your home more effectively. This will regulate the temperature inside your garage and reduce heat loss or gain. This leads to a more comfortable living environment, especially if your garage is attached to your home.

| | |
|----------------|---|
| Glazing | Vision laths only available on White, Black or Anthracite Grey |
| Opening method | Electric (with operator) Electric (with app)  |
| Frames | Novorol 77 Guides - 70mm up to 3m wide Over 3m is 90mm guides Novorol 55 Guides - 65mm |
| Certification | Compliant with ISO 9001 and the safety requirements of European garage door standard EN 13241 |

STEEL UP & OVER GARAGE DOORS

The up and over door is the tried and tested classic among garage doors and is a widely popular choice across the UK.

These doors are manufactured with a single galvanised door leaf equipped with spring-mounted lever arms at the sides and can either be operated manually or with an electric operator. Installation is simple, regardless of whether it is a new build or renovation, whether it is a standard sized garage door completely pre-assembled at the factory or a bespoke, made to measure door for a prefabricated garage.

Available in two gear types Canopy and retractable

- Canopy doors are the most popular style of lifting gear, ideally matched to where there is limited headroom for tracks.
- Retractable doors are an alternative lifting gear with horizontal tracks that are attached to the top of the door frame to guide the door open, providing an exceptionally smooth opening and closing motion.



Cream
RAL 9001



Jet
Black
RAL 9005



Anthracite
Grey
RAL 7016



Steel
Up & Over Doors



Traffic
White
RAL 9016

Advantages

Made To Measure

Garage doors in custom sizes to suit your space.

Secured by Design Door Range

Police security initiative.

Easy Operation

These garage doors can be purchased in either a manual operation or an automated operation.

Low Maintenance

Regular cleaning is needed and occasional checking of moving parts in the garage door to keep it functioning smoothly, reliably and quietly without any squeaking noises.

Reliable Security with Lock Systems


Improving your home security with security features and protection against forced entry. Twin strong locking bars with 4 point locking system available. Cylinder lock as standard.

Wide range of styles, materials and colours

Fully customisable to your specific and desired style to match your home.

Specification

| | |
|--------------------|---|
| Material | Steel |
| Overall dimensions | Up to 5m wide Double Up to 2.74m wide Retractable Up to 2.44m wide Canopy |
| Surface finish | Stippled surface |
| Door designs | 10 Designs: Steel Vertical & Horizontal Steel Panelled Steel Larger Rib |
| Colours & finishes | 24 Attractively priced preferred colours: Golden Oak & Rosewood available on selected designs. RAL colours of your choice |
| Glazing | Available on selected designs (Regency, Georgian or Berwick) |

| | | |
|-----------------|--|---|
| Opening method | Automated and manual for Retractable Manual for Canopy |  |
| Frames | Steel Frame Canopy 54mm legs and 44mm head frames Single Retractable – 70mm Legs and 45mm Head Double Retractable – 68mm Legs and 68mm Head | |
| Security rating | SBD door range (Novoguard) in Horizontal, Vertical and Berwick design | |
| Certification | Compliant with ISO 9001 and the safety requirements of European garage door standard EN 13241 | |

Steel Side Hinged Doors



Anthracite Grey
RAL 7016



Jet Black
RAL 9005



Chartwell Green
BS4800

STEEL SIDE HINGED GARAGE DOORS

Our popular side hinged doors offer a 'traditional' operation and are ideal if there are any obstructions within the garage. With excellent security and very durable construction, this ensures a long and trouble-free service for your side hinged garage doors.

Side hinged doors open as per a normal pedestrian door with two door leaves connected by hinges at the side to the main door frame. The doors consist of two doors that open "barn door" style rather than operating vertically.

Customers can choose a 50/50 split with both doors of equal size, or an offset configuration, with one smaller personnel door.

Advantages

Made To Measure

Side-hinged garage doors tailored to your exact specifications.

Easy Access for Use and Storage

These doors swing open to the side, allowing for convenient entry and exit from the garage. This is especially beneficial if you need to bring in larger items or if you use your garage frequently.

Two Doors for Convenience

Our side hinged doors can be split 50/50 or offset, creating a large door and a standard-sized door that open independently. This is perfect for homeowners who want regular access to their garage without opening the entire door panel every time.

Ventilate Your Garage Easily

Side hinged doors are designed to allow for better ventilation compared to other types of garage doors. The side opening allows for air to flow through the garage, keeping it cooler during hot weather. This can be particularly useful if you use your garage as a workshop or if you want to improve the air circulation in the space.

Increased Durability: Enjoy a Longer Lifespan

Our side hinged garage doors are made from premium grade galvanised steel. They are also likely to go longer without repairs or maintenance than other garage door options. This is because, unlike other garage doors, there is no upward lift to open side hinged doors. Unlike the mechanisms required to keep standard garage doors working, you only have to worry about the robust hinges on these profiles.


Improve The Security of Your Garage

Security is a top priority for any homeowner, and side hinged doors offer excellent security features. These doors can be fitted with multiple locking points, providing enhanced protection for your garage and its contents. Our full range of side hinged doors features an overlap where the doors meet, securing the connection point and preventing forced entry. You can have peace of mind knowing that your belongings are safe and secure.

Style That Suits Your Home

Side hinged garage doors also come in a variety of styles and finishes, allowing you to choose an option that complements the exterior of your home. Whether you prefer a traditional or contemporary look, there is a side hinged door design that will suit your taste and enhance the overall aesthetic appeal of your property.

Specification

| | |
|--------------------|--|
| Material | Steel |
| Overall dimensions | Up to 2.438m wide (Design specific) |
| Surface finish | Stippled surface |
| Door designs | 9 Designs: Steel Vertical & Horizontal Steel Panelled Steel Larger Rib |
| Colours & finishes | 24 Attractively priced preferred colours Golden Oak & Rosewood available on selected designs. RAL colours of your choice |
| Glazing | Transparent and Stippled (on Regency, Georgian or Berwick) |
| Opening method | Manual operated (with handle)  |
| Frame | 50mm Frame |
| Certification | Compliant with ISO 9001 and the safety requirements of European garage door standard EN 13241 |

OUTA-DOR

OUTA-DOR sets the standard for external steel doors, with an industry-leading specification and up to 10 years anti-corrosion warranty.



Specification

| | |
|---------------------|--|
| Material | Leaf: 1.2mm Magnelis® Frame: 1.5mm Magnelis® |
| Thickness | 55mm |
| Infill | Honeycomb or Mineralwool |
| Vision panels | Yes* |
| Louvres | Yes* |
| Side panels | Yes - glazed, solid & louvred; removable, hinged or fixed* |
| Over panels | Yes - glazed, solid & louvred; removable, hinged or fixed* |
| Hardware | Manual, automatic, panic & electronic lock. Range of door closers & limit stays available |
| Frames | A, B, C, D & F |
| Fire rating | 60, 120 or 240 minutes - Honeycomb Infill 60 minutes - Mineralwool Infill Tested to BS EN 1634-1 |
| Other certification | Acoustic rating: Honeycomb - 26dB (single) / 28dB double. Mineralwool - 34dB (single) / 36dB double |
| Warranty | Up to 10 years |

* Fire rating and/or U value requirements may affect available specification

Commercial and Industrial Doorsets

Fire rated and security rated steel doors suitable for internal and external applications within industrial and commercial settings.

Product Overview

This versatile solution is available fire rated for up to 240 minutes, and the THERM specification provides a U value of just 1.5W/(m²K).

Applications

OUTA-DOR is suitable for a wide range of external applications - from schools and hospitals, to multi-storey car parks and supermarkets.

Advantages

The versatility of OUTA-DOR is unrivalled. Every door is custom-built to your specification, and with a vast range of compatible hardware, vision panels and louvres you can be sure of a high performance and stylish solution that's built to last.

INNA-DOR



Product Overview

Our versatile INNA-DOR boasts an industry-leading specification - being available fire rated for up to 240 minutes, tested for smoke leakage to BS EN1634-3, and providing up to 10 years anti-corrosion warranty.

Applications

The broad range of available sizes, panels, hardware, colours and certifications mean that INNA-DOR steel doorsets are suitable for use in a wide range of internal applications, including schools, offices, healthcare and retail.

Advantages

The ultimate internal door solution, INNA-DOR is available with a honeycomb core as standard but this can be substituted for mineralwool where thermal transference needs to be reduced, or a timber core for added strength and reinforcement.

All doors are custom-made to order, so you can be sure of the perfect solution whatever your requirements.

Specification

| | |
|---------------------|---|
| Material | Leaf: 1.2mm Magnelis® Frame: 1.5mm Magnelis® |
| Thickness | 55mm |
| Infill | Honeycomb or Mineralwool |
| Vision panels | Yes* |
| Louvres | Yes* |
| Side panels | Yes - glazed, solid & louvred; removable, hinged or fixed* |
| Over panels | Yes - glazed, solid & louvred; removable, hinged or fixed* |
| Hardware | Manual, automatic, panic & electronic lock. Range of door closers & limit stays available |
| Frames | A, B, C, D, F & E |
| Fire rating | 30, 60, 120 or 240 minutes - Honeycomb Infill Tested to BS EN 1634-1 |
| Other certification | Smoke tested to BS EN1634-3. Acoustic rating: Honeycomb - 26db (single) / 28dB (double). Mineralwool - 34dB (single) / 36dB double 36dB double |
| Warranty | Up to 10 years |

*Fire rating and/or U value requirements may affect available specification

ROBUST

Product Overview

PAS 24 (2022) certified, SECUR-DOR 2.1 is available with vision panels or louvres if required, and certain specifications can be fire rated on request too.

Applications

SECUR-DOR 2.1 is tested to STS 201 and PAS 24 (2022), and is Secured by Design approved. It's therefore ideal for use in low to medium risk properties, for example apartment doors in residential and social housing developments.

Advantages

SECUR-DOR 2.1 offers a wide flexibility of features, all covered with comprehensive third party testing. It also features a new and exclusive collection of ARRONE panic exit hardware that was specifically developed in conjunction with the design team at HOPPE (UK) to provide all the quality, performance and security you need but at a lower cost.

Specification

| | |
|---------------------|--|
| Material | Leaf: 1.2mm Magnelis® Frame: 1.5mm Magnelis® |
| Thickness | 55mm |
| Infill | Mineralwool |
| Vision panels | Yes* |
| Louvres | Yes* |
| Hardware | Exclusive cost effective ARRONE panic exit hardware. Hooply or Mico Modular or manual locking hardware also available. |
| Frames | C Frame |
| Fire rating | 60 minutes to certain specifications on request. Tested to BS EN 1634-1 |
| Security rating | STS 201, PAS 24 (2022), Secured by Design |
| Other certification | BS EN 6375-1, 2 & 3 (2015) for air permeability, water tightness and wind resistance |
| Warranty | Up to 10 years |

*Fire rating and/or U value requirements may affect available specification

SECUR-DOR 2.1

Our re-designed and enhanced SECUR-DOR 2.1 offers more choice and versatility, without compromising on performance.



TUFF-VENT

Product Overview

PAS 24 certified and Secured by Design accredited, our TUFF-VENT doorset offers maximum free airflow whilst maintaining strength & security. Large openings can be made up with side and over panels, and the entire doorset is polyester powder coated to a colour of your choice as standard.

Applications

TUFF-VENT is ideal for applications such as plant rooms and boiler rooms where continuous airflow is required alongside protection of equipment or machinery.

Advantages

A 2mm steel louvre blade is used throughout, welded at every junction for additional strength, and a variety of meshes can be applied to protect against insects, birds or rodents as required.

Specification

| | |
|-----------------|--|
| Material | Leaf: 3mm thick box section with 2mm louvre blade. Frame: 1.5mm Magnelis® |
| Thickness | 55mm |
| Louvres | Fully louvred |
| Side panels | Yes - louvred |
| Over panels | Yes - louvred |
| Hardware | Hooply sashlock |
| Frames | C Frame |
| Security rating | PAS 24 (2022), Secured by Design |
| Warranty | Up to 2 years |

* Fire rating and/or U value requirements may affect available specification

TUFF-DOR 2.1

Product Overview

TUFF-DOR 2.1 is a security door made to last. LPS1175 (SR2 Issue 8) certified and Secured by Design accredited, it offers enhanced security against potential intruders.

Not just intruder resistant, TUFF-DOR 2.1 is also available fire resistant for up to 60 minutes to certain specifications.

Applications

TUFF-DOR 2.1 has been specifically designed for use in a wide range of domestic or light commercial premises that require protection beyond that of a standard steel door, such as warehousing, retail back-of-house, universities, leisure centres, and public buildings and offices.

Advantages

Constructed from Magnelis® steel for superior corrosion resistance, TUFF-DOR 2.1 features additional internal reinforcement in strategic locations to enhance attack resistance and door strength, whilst remaining light enough not to require mechanical handling on site. All doors are custom-made to order, so you can be sure of the perfect solution whatever your requirements.

Specification

| | |
|-----------------|---|
| Material | Leaf: 1.5mm Magnelis® Frame: 1.5mm Magnelis® |
| Thickness | 55mm |
| Infill | Mineralwool |
| Vision panels | Yes* |
| Hardware | Selected range of manual and electronic locks and panic hardware. Range of door closers and limit stays available |
| Frames | C Frame |
| Fire rating | 60 minutes on request, to certain specifications. Tested to BS EN 1634-1 |
| Security rating | LPS 1175 SR2 Issue 8 |
| Warranty | Up to 10 years |

* Fire rating and/or U value requirements may affect available specification



GLAS-DOR



Product Overview

GLAS-DOR is a fire rated, fully glazed steel profile solution for hinged or sliding doors, partitions, facades and screens. Offering fire resistance, intruder resistance, ballistic resistance and acoustic reduction without compromising on style, it ticks the box for both performance and aesthetics.

Applications

Ideal for use in both commercial and residential spaces such as foyers, atriums and corridors in hotels, office blocks, apartments, airports, hospitals, schools and retail environments.

Advantages

The slender steel profiles ensure minimal sight lines and unrestricted light flow whilst providing security and fire resistance to recognised standards - all of which are verified through third party testing and certification.

All GLAS-DOR products are manufactured to order.

Specification

| | |
|---------------------|---|
| Material | 1.5mm galvanised steel |
| Thickness | 30-85mm |
| Infill | Glazed as standard, but solid or louvred options available |
| Vision panels | Fully glazed |
| Side panels | Yes - glazed, solid & louvred |
| Over panels | Yes - glazed, solid & louvred |
| Hardware | Manual, automatic, panic & electronic lock. Range of door closers & limit stays available |
| Frames | 30mm, 50mm & 85mm profiles as standard. Slimline profile option on request |
| Fire rating | Up to 60 minutes fire resistance (E60) or both resistance & integrity for up to 90 minutes (EI90) |
| Security rating | Intruder resistant to EN 1627 (RC2 to RC4). Ballistic resistant to EN 1522-2 |
| Other certification | Smoke rated to EN 1634-3 (Sa, S200) |
| Warranty | Up to 2 years |

* Fire rating and/or U value requirements may affect available specification



TEMP-DOR



Product Overview

TEMP-DOR offers a secure, temporary solution for instances where premises require protection until a permanent door can be installed. The product specification stated is for our standard product, but we can manufacture TEMP-DOR to suit your requirements; with vision panels, louvres, to different heights or widths, and in a PPC colour of your choice.

Applications

TEMP-DOR is a ready-made, re-usable modular doorset that can be quickly and easily installed in any commercial or industrial premises in the event of door damage, vandalism or replacement delays.

Advantages

Purpose-built to maintain building security and safety, TEMP-DOR is non-handed, includes a sashlock to allow escape function to BS EN 179, and can be adjusted to cover a wider structural width than most other temporary products.

Specification

| | |
|---------------|--|
| Material | Leaf: 12mm Magnelis® Frame: 1.5mm Magnelis® |
| Thickness | 55mm |
| Infill | Honeycomb |
| Vision panels | Available for custom orders |
| Louvres | Available for custom orders |
| Side panels | Available for custom orders |
| Over panels | Available for custom orders |
| Hardware | Morticed escape sashlock c/w lever handles and double cylinder to allow escape function to BS EN 179 |
| Frames | Adjustable C frame 875mm - 1095mm width, 1900mm fixed height |

* Fire rating and/or U value requirements may affect available specification

RISER-DOR

Product Overview

RISER-DOR is a fire rated, custom-built solution that provides discreet access to building services without detracting from interior aesthetics.

Specially designed to sit flush within the wall, it features concealed hinges and minimal hardware without compromising on functionality.

Applications

RISER-DOR provides easy access to electrical wiring, plumbing and HVAC systems within vertical service shafts, and is therefore ideal for use in commercial and residential multi-storey buildings, such as hotels, office blocks, hospitals, and education facilities.

Advantages

E120 fire rated, RISER-DOR contains flames within the shaft for up to two hours, or if the fire originates elsewhere in the building it will stop the fire spreading into the shaft for the same duration, thereby protecting the services within. Lightweight and easy to fit, each door is custom made to order, and this includes a PPC finish in the colour of your choice to ensure seamless integration with the surrounding wall for a clean, modern look.

Specification

| | |
|---------------------|--|
| Material | Leaf: 12mm Magnelis® Frame: 1.5mm Magnelis® |
| Thickness | 55mm |
| Infill | Mineralwool |
| Hardware | 3 point lock with T bar key to unlatch and open the leaf |
| Frames | Flush frame |
| Fire rating | E120 |
| Other certification | Thermal U value of 2.2W/(m²K) |

* Fire rating and/or U value requirements may affect available specification

THERMAL COMMERCIAL SLIDING DOOR SYSTEMS

2021 +

Horton 2021+ sliding door system; a thermally efficient design, suitable for installation in education, healthcare, retail & commercial settings, where focus on climate change and a drive towards net zero is of growing importance.

Applications

Commercial premises, education, healthcare, leisure facilities, transport and retail. Sliding door systems are ideal for high traffic footfall environments.

• Energy Efficiency

The use of thermal breaks in an aluminium frame reduces the heat transfer, resulting in a more energy

• Durability

Aluminium is a heavy-duty, lightweight material able to withstand hard weather conditions, ensuring longevity and robustness.

• Aesthetics

Aluminium doors are versatile, able to be customised to fit any design style, with the option of a range of colours and finishes.

• Accessibility

Aluminium doors are easy to operate and can be fitted with a variety of hardware options, such as automatic operators to provide ease of access to all users.

• Sustainability

Aluminium is a highly recyclable material, making it an eco-friendly option for buildings.

Systems

Single Sliding Doors

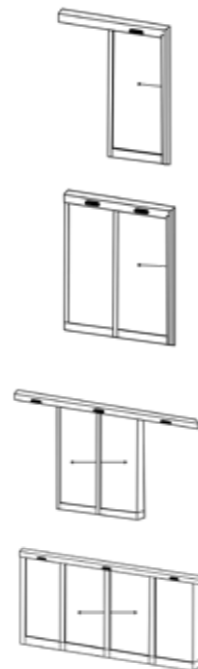
Thermally broken single sliding door package with pocket safety screen.

Thermally broken single sliding door package with fixed screen and pocket safety screen.

Bi-Parting Sliding Door

Thermally broken bi-parting sliding door package with pocket safety screens.

Thermally broken bi-parting sliding door package with fixed screens and pocket safety screens.



Horton Sliding Door Systems

Specification

| | Single Door | Double Door |
|--------------------------|--|-------------|
| Maximum width | 1.6m | 3m |
| Maximum height | 2.8m | 2.8m |
| Jointing | Mechanical | Mechanical |
| Internally beaded option | Yes | Yes |
| Glazing options | Will accept insulating glass units and Infill panels 28-47mm thick | |
| Finishes | Mill Finish / SAA Polyester Powder Coat Paint Finish | |
| Option | Single or Dual Colour to any RAL/BS Colour | |
| Design standards | BS EN 12020-2:2001 Aluminium and aluminium alloys, extruded precision profiles. BS 3987:1991 Specification for anodic oxide coatings. BS EN 12206-1:2021 Paints and varnishes, coating of aluminium and aluminium alloys. BS 4873:2016 Specification for aluminium alloy windows and doorsets. BS EN 14351-1:2006+A2:2016 Windows and doors, performance characteristics. BSEN ISO 10077-2:2017 Thermal performance of windows, doors and shutters. | |

| | |
|-----------------------|---|
| Application | Automatic with the Horton 2021+ sliding door operator. Please refer to separate data sheet. |
| Manual locking | Cylinder operated, fitted with cylinder hooklock externally and cylinder or thumb turn internally. |
| Electric locking | Electromechanical auto lock within the Horton 2021+ sliding operator. |
| Automatic options | Radars, combination activation & presence sensor, push buttons, touchless switches. Access control compatible. |
| Pocket safety screens | Available supplied & fitted: Full height aluminium framed and glazed (6.4mm clear lam) pocket safety screens in a PPC finish. Pivoted or hinged designs available. Frameless pivoted pocket safety screens constructed from Horton PPC top and bottom rails, with 12mm clear toughened glass. |



BESPOKE SLIDING DOOR SYSTEMS

ProSlide® 360 Sliding Door

ProSlide® 360 Sliding Door it is a curved sliding door, which consists of two sets of curved, bi-parting sliding doors forming a lobby. It is a versatile solution for a reliable and functional entrance in a wide range of applications. This innovation is available with either solid or glazed curved walls. Bespoke, extended canopies, lighting, matting, air curtain.

Applications

Commercial premises, education, healthcare, statement/focal point entrances, retail.

- **Fully Automatic**

- **DDA Compliant**

- **Safety & Quality**

All Horton drives are designed to meet requirements of BS EN 16005, and are manufactured in the UK to accredited BS EN ISO 9001 quality management systems. Installed only by BS EN 16005 accredited authorised engineers.

Emergency opening, via interface with fire alarm system and a monitored battery back-up during power loss.

- **Energy Efficient**

Inner and outer door sets independent of each other - allowing flexibility with operational requirement.

Electric locking to both the inner and outer door sets, giving ability to interface with access control systems for secure access.

Accessories Available

- Ceiling lights
- Electro mechanical secure locking
- All curved sliding doors as standard are fitted with presence safety sensors - for full compliance with BS EN 16005.
- Reduced opening operation
- Interlock function
- Entrance matting
- Integral canopy heater
- External weathertight roof
- External weathertight roof extended canopy



Specification

Design

The curved door design increases the available passage width compared to linear sliding doors. Drive controls and transmission are concealed within the ceiling. The complete system is engineered to provide a long life time of reliable, safe and functional operation.

Finishing and Glazing

With many size and surface finish options the system can match and complement a wide variety of entrance design concepts. Polyester powder coating applied in our own facility, anodised, colour anodised, or metal clad finishes. Glazing options include clear or tinted safety glass and bespoke midrails.

Operation

Each door set can operate individually or synchronised to function as an 'air-lock' control via program switch. The integral microprocessor control system monitors operation and components for correct operational and safety function. Settings and service routines are directly accessible to engineers without restrictive additional service devices.

- Fully adjustable hold open time
- Adjustable door speed
- Power - 240VAC, 50hz, 250W

Dimensions

Manufactured to site specific requirements. Typically 2.1to 2.6M through passage height. 300mm to 900mm canopies for diameters of 2 to 3.8m.

Activation

- Radar - motion & directional
- Push switches
- Touch switches
- Integration with access control systems - by others



PAS24 SLIDING DOOR SYSTEMS

2021 + PAS24

Engineered to deliver the highest levels of safety and security, the PAS 24 Sliding Door System is designed to meet the demanding requirements of modern commercial environments. PAS 24 = "Publicly Available Specification 24"

It sets a minimum security standard for external doors and windows in homes and buildings.

Doors are rigorously tested against methods of forced entry (cutting, prying, impact, etc.).

Certification ensures the door can withstand real-world burglary attempts while still being functional and accessible.

Ideal for airports, healthcare, retail, transport hubs, education, commercial premises and high-security facilities.

Security

Reinforced door construction to deter break-ins and protect property.

Meets UK Building Regulations

Especially important for new builds, refurbishments, and projects that must adhere to secure-by-design requirements.

Recognised Certification

PAS 24 is an accepted standard across industries, useful for housing, healthcare, education, and commercial properties.

Durability

Doors are tested for strength and resilience, ensuring long-term performance.

Sustainability

Built for durability, reducing the need for frequent replacements.



Specification

| | Single Door | Bi Parting Door |
|--------------------------|---|-----------------|
| Maximum tested width | 1400mm | 2800mm |
| Maximum tested height | 2540mm | 2540mm |
| Jointing | Mechanical | Mechanical |
| Internally beaded option | Yes | Yes |
| Glazing options | SAA Finish. Polyester Powder Coat Paint Finish - Single or dual colour to any standard RAL/BS colour. | |
| Floor track | Single or dual colour to any RAL/BS colour. | |
| Design standards | BS EN 12020-2:2001 Aluminium and aluminium alloys, extruded precision profiles. BS 3987:1991 Specification for anodic oxide coatings. BS EN 12206-1:2021 Paints and varnishes, coating of aluminium and aluminium alloys. BS 4873:2016 Specification for aluminium alloy windows and doorsets. BS EN 14351-1:2006+A2:2016 Windows and doors, performance characteristics. BS EN ISO 10077-2:2017 Thermal performance of windows, doors and shutters. | |
| Application | Automatic with the Horton 2021+ sliding door operator. <i>Please refer to separate data sheet.</i> | |
| Manual locking | High security multi-point manual locking system. | |
| Electric locking | Electro-mechanical locking - optional. | |
| Automatic options | BEA Ixio combination activation and presence sensors, range of push buttons and touchless switches. Access control compatible. | |
| Pocket safety screens | <ul style="list-style-type: none"> • Available supplied and fitted. Full height aluminium framed and glazed pocket safety screens in a PPC finish. • Pivoted or hinged designs available. • Frameless pivoted pocket safety screens constructed from Horton PPC top and bottom rails, with 12mm clear toughened glass. | |
| Floor tracks | Continual Floor tracks; available in recessed design or surface mounted into the threshold. | |
| U Value | 1.8U Value with glass 1.0U centre pane value. | |



SWING DOOR SYSTEMS

Folding Access® Operator

The innovative folding design maximises passage width within a restricted structural opening, combined with a minimal swept area it is an ideal solution for entrance lobbies and corridors where space is at a premium. Folding doors have an increased wind-load capacity compared to swing doors.

Applications

Commercial premises, education, healthcare, leisure facilities, transport and retail.

• Secure

All Horton drives are designed to meet requirements of BS EN 16005. The folding design incorporates the built-in safety of a low closing force, threshold safety beams, presence sensing safety sensors and anti-finger trap design at all hinge points. Barriers ensure a safe approach to doorway.

• Quality

Manufactured in the UK to accredited BS EN ISO 9001 quality management system and installed by BS EN 16005 accredited authorised engineers.

• Emergency Breakout

Emergency breakout allows doors to swing outwards at any point during door movement for emergency escape or movement of bulky goods

• Fully Automatic

Controlled opening and closing movement is achieved with powerful DC motors and a microprocessor based control system. Door functions, settings and service routines are directly accessible to engineers without additional devices.

Four Leaf Bi-folding:

- Max Unit Width - 2.5M
- Passage Height - 2.1 to 2.5M
- Passage Width - unit with less -500mm
- Break-out Opening - unit width less -320mm

Two Leaf Folding:

- Max Unit Width - 1.3M
- Passage Height - 2.1 to 2.5M
- Passage Width - unit with less -300mm
- Break-out Opening - unit width less -200mm



Specification

Design

Constructed using full frame sections for resilient operation in high traffic applications. Drive controls and operators are unseen, mounted within the extruded aluminium transom. Options include double glazing, midrails, fixed side screens and threshold free installations. Available as two or four leaf versions.

Finishes

Aluminium surfaces polyester powder coated to RAL/BS colour applied in our own facility. Anodised and bespoke finishes also available.

Operation

Controlled opening and closing movement is achieved with powerful DC motors and a microprocessor based control system. Door functions, settings and service routines are directly accessible to engineers without additional devices.

- Power: 240VAC, 50hz, 250W
- Hold open time: adjustable 0 to 30sec
- Adjustable door speed and torque
- Operation to BS EN 16005

Dimensions

Bespoke manufacture to meet project requirements.



THERMAL COMMERCIAL SWING DOOR SYSTEMS

4100 - Plus

Horton 4100-Plus swing door system is a thermally efficient product. Typically for use on high footfall entrances – swing doors are the most widely used form of entrance door in the UK. Outward opening configuration ideal for escape routes. Cost effective, Versatile and can be used in almost any entrance setting. Suitable for smaller structural openings where other door types are impractical. Swing door automation can also be retrofitted to internal doors, and existing external doors – providing a value for money solution for providing DDA friendly access into and around the building.

Applications

Commercial premises, education, healthcare, leisure facilities, transport and retail.

• Energy Efficiency

The use of thermal breaks in an aluminium frame reduces the heat transfer, resulting in a more energy efficient building.

• Durability

Aluminium is a heavy-duty, lightweight material able to withstand hard weather conditions, ensuring longevity and robustness.

• Aesthetics

Aluminium doors are versatile, able to be customised to fit any design style, with the option of a range of colours and finishes.

• Accessibility

Aluminium doors are easy to operate and can be fitted with a variety of hardware options, such as automatic operators to provide ease of access to all users.

• Sustainability

Aluminium is a highly recyclable material, making it an eco-friendly option for buildings.

Systems

Manual swing

Thermally broken manual swing door systems in single and paired configurations

Automated swing

Thermally broken automated swing door systems combining the heavy-duty kestrel doors with our Horton 4100-Plus automation.

Available in single and paired configurations.



Specification

| | Single Door | Double Door |
|--------------------------|---|-------------|
| Maximum width | 1100mm | 2200mm |
| Maximum height | 2500mm | 2500mm |
| Jointing | Mechanical | Mechanical |
| Internally beaded option | Yes | Yes |
| Glazing options | Will accept insulating glass units and Infill panels 28-47mm thick | |
| Finishes | Mill Finish / SAA Polyester Powder Coat Paint Finish | |
| Option | Single or Dual Colour to any RAL/BS Colour | |
| Design standards | BS EN 12020-2:2001 Aluminium and aluminium alloys, extruded precision profiles. BS 3987:1991 Specification for anodic oxide coatings. BS EN 12206-1:2021 Paints and varnishes, coating of aluminium and aluminium alloys. BS 4873:2016 Specification for aluminium alloy windows and doorsets. BS EN 14351-1:2006+A2:2016 Windows and doors, performance characteristics. BS EN ISO 10077-2:2017 Thermal performance of windows, doors and shutters. PAS 24:2016 Enhanced security performance requirements for doorsets and windows. | |
| Application | Manual or automatic (With the Horton 4100-Plus Operator) Please refer to separate datasheet | |
| Manual locking | Single or multi-point manual locking | |
| Electric locking | Single or double maglocks ES8000 Trimec V-Lock (PAS24 Compliance on a single door in the electrically locked state). Single electric strike lock | |
| Automatic options | Radar, Push button, Touchless switches, Access Control compatible | |
| Safety barriers | Available supplied & fitted: Aluminium powder coated with glass Infill panel, freestanding or wall to floor mounted. Stainless steel with glass Infill panel, freestanding or wall to floor mounted. Bollards with integral push to open buttons also available. | |



DOOR & ENTRY SOLUTION SPECIALIST

BGS is the UK's leading industrial door and access solutions specialists. We essentially act as a one-stop shop for businesses. We provide end-to-end support, from scheduled maintenance and responsive repairs to new installations and manual upgrades.

Take a look at what we offer:



SCHEDULED MAINTENANCE

We provide routine maintenance to ensure your doors, gates, barriers, and loading bay systems remain fully functional, compliant, and safe.



SUPPLY AND INSTALLATION

Supply and installation of new doors, gates, barriers, and loading bay systems. We offer a comprehensive range of options, from lift arm barriers to industrial sectional overhead doors.



SERVICING AND REPAIRS

We offer comprehensive repair services for a wide range of products. Our experienced engineers are adept at addressing various issues, including mechanical failures, electrical malfunctions, and structural damage.

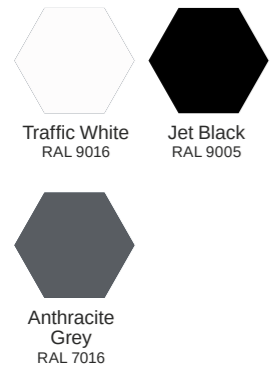


AUTOMATION AND UPGRADES

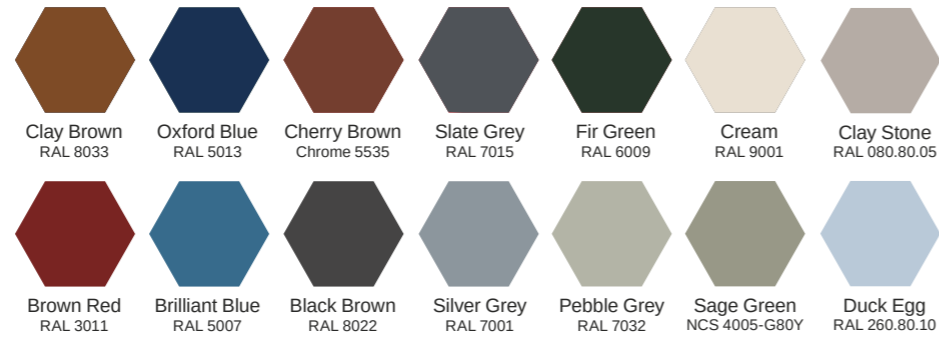
Delivering automation and upgrade solutions for doors, gates and barriers. We convert manually-operated entry/access solutions into fully automated systems.

STEEL UP & OVER AND SIDE HINGED DOORS DECOR RANGE

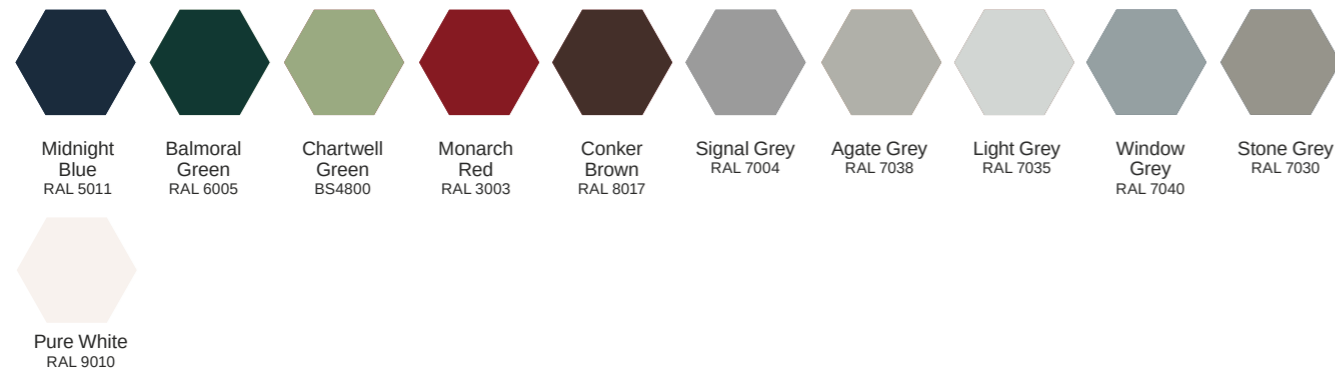
Essential Colours



Elite Colours



Standard Colours



NOVOROL DOORS DECOR RANGE

Standard Colours

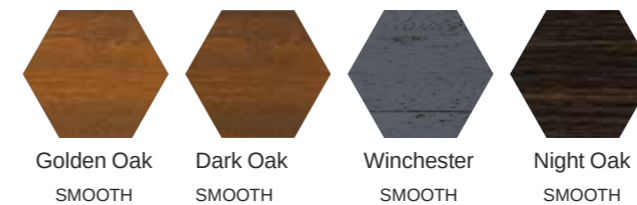


SECTIONAL DOORS DECOR RANGE

Super-Color Colours



Rustic Wood Effects



Satin Colours



Microline Pattern (Flush)



Novoferm UK

Unit 5 - 9
North Luton Industrial Estate
Sedgwick Road
Luton LU4 9DT
T: 01582 563 777
E: customerservice@novoferm.co.uk
www.novoferm.co.uk

Robust UK Ltd

Coaldale Road
Lymedale Business Park
Newcastle-under-Lyme
Staffordshire ST5 9QX
T: 01782 592 900
E: marketing@robust-uk.com
www.robust-uk.com

Horton Automatics Ltd

Unit A
Hortonwood 31
Telford TF1 7YZ
T: 01952 670 169
E: customerservice@hortonautomatics.co.uk
www.hortonautomatics.co.uk

BGS Ltd

Unit 5 - 9
North Luton Industrial
Estate, Sedgwick Road
Luton LU4 9DT
T: 08085 015364
E: info@bgs.uk
www.bgs.uk