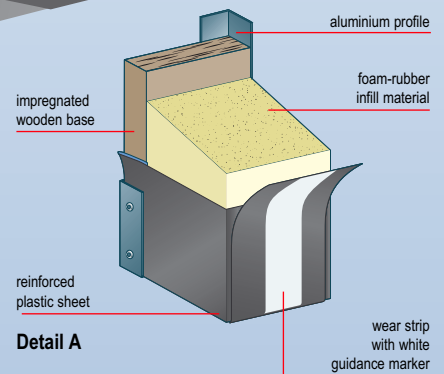
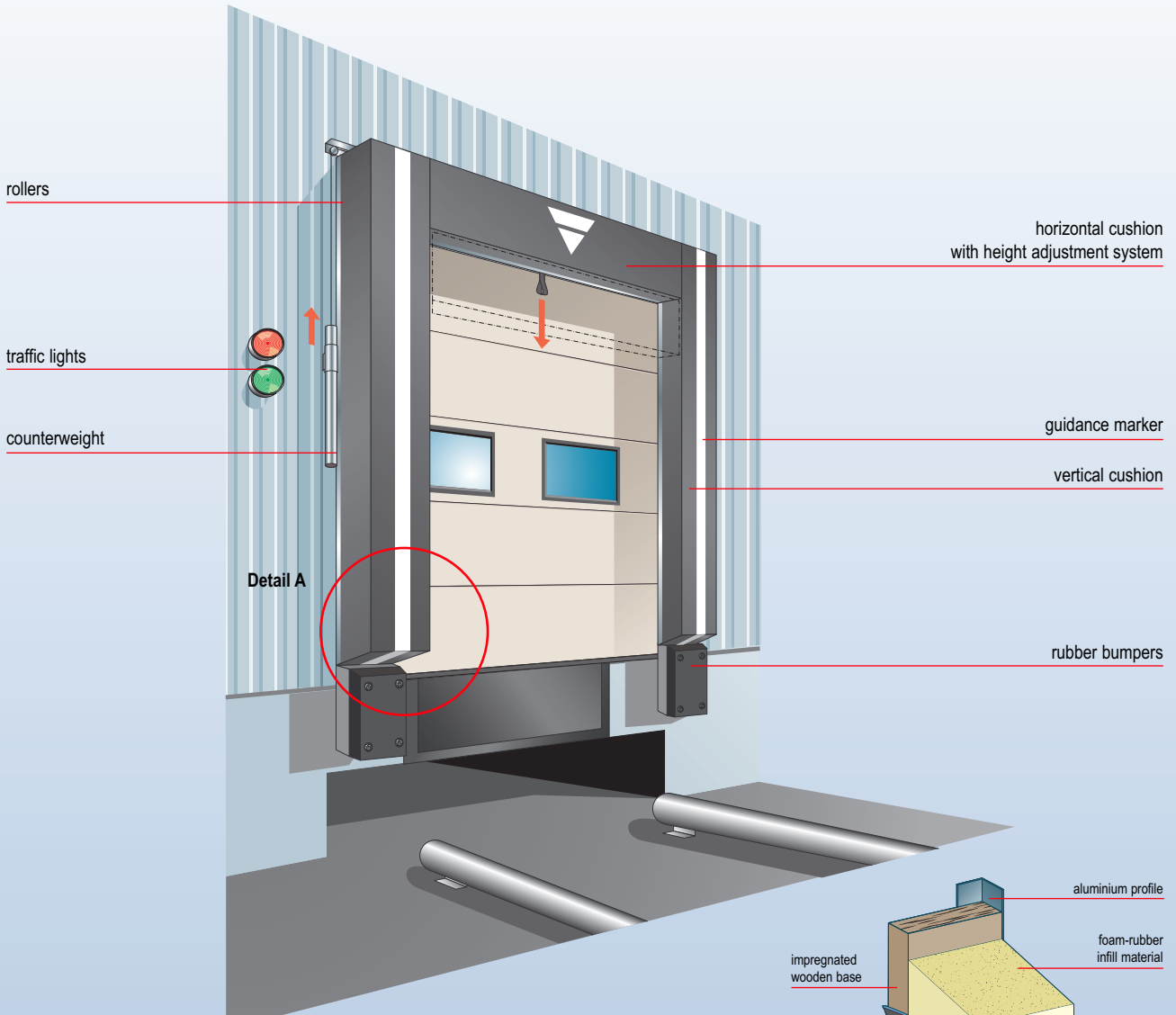


horizontal cushion with height adjustment system



Features

- perfect seal
- wear-resistant cushions
- extra wear pads available
- white marker stripes
- superior quality foam-rubber infill material
- choice of black or blue
- horizontal cushion with height adjustment system
- various models available.

Novoferm's adjustable horizontal cushion dock seals offer protection against draughts, rain and wind. They create a perfect seal between heavy goods vehicles and the building. This reduces energy loss, the risk of damage to goods and sickness absenteeism resulting from poor working conditions. They also help keep birds and insects out of the building.

Area of application

Dock seals are only suitable for a limited range of heavy goods vehicle widths. Consequently, dock seals are generally only used by companies that operate one main type of vehicle. Making the horizontal cushion adjustable in height considerably extends the sealing range of the system.

Components and construction

Novoferm's adjustable horizontal cushion dock seals consist of one horizontal and two vertical cushions made of compressible foam-rubber and upholstered with reinforced plastic sheet. Each cushion is attached to a wooden base. The front face of the vertical cushions features a wear pad made of reinforced plastic sheet. The cushions are installed around the door opening on the outside of the building and seal the gap between the heavy goods vehicle and the building. A counter-balance arrangement balances the weight of the horizontal cushion and allows easy manual adjustment.

Materials

- 40 mm thick base plate made of impregnated pine
- cushions made of high density foam-rubber
- the cushions are upholstered using vinyl sheet (650 gr/m²)
- wear pad made of transparent plastic on the front face of the cushions
- available colours: black and blue
- aluminium fixing channel
- Ertalon guide rollers.

Safety features

- vertical white marker stripes on the front face of the vertical cushions guide the driver when backing up
- the use of 150 mm thick rubber bumpers is recommended; this reduces the extent to which the cushions can be compressed (see options).

Structural requirements

The seal mounting surface on the outer face of the building must be:

- flat
- offer sufficiently stability
- allow seal installation using screw fasteners or bolts.

In the case of corrugated cladding, it is recommended that a flat recess is made in the cladding using pressed opening trim plates to create a mounting surface for the dock seal.

Standard cushion dimensions

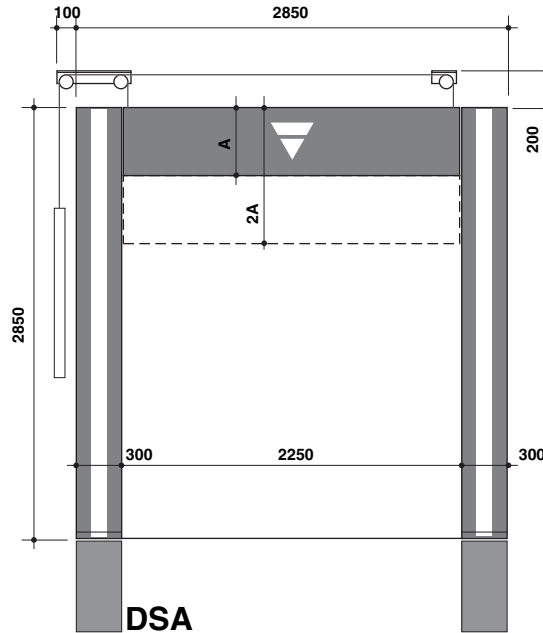
- vertical cushion width300, 400 or 500 mm
- horizontal cushion height.....300, 450 or 600 mm
- depth300 mm
- adjustment rangemax. 2 x cushion height

Seal dimensions

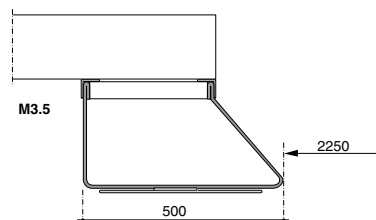
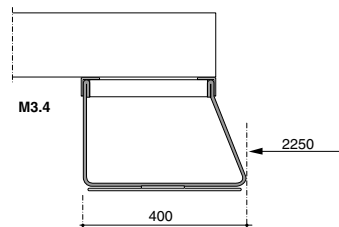
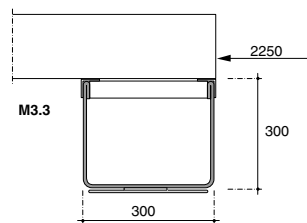
- the dimensions of the dock seal are a function of the size of the vehicles that will dock.

Auxiliary components/ options/ accessories

- letters or digits on the horizontal cushion
- dimensions other than standard
- heavy-duty rubber bumpers (300x600x150 mm)
- sealing flap, a simple accessory that allows the dock seal to seal effectively over a greater height range
- bottom seal, and extra sealing cushion on the underside of the dock opening (can also be used in combination with dock boards).



Front view



Dimensions