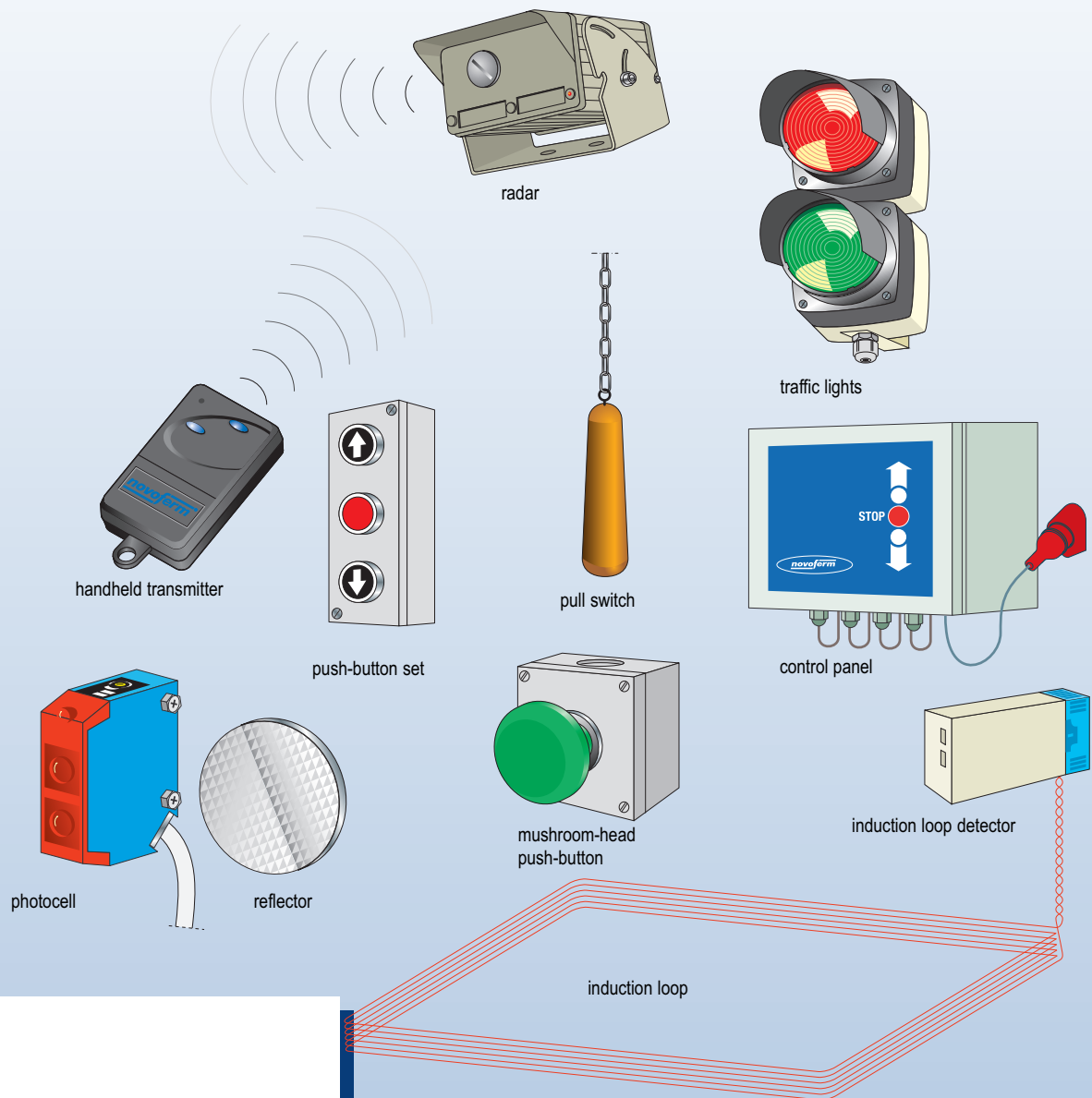


Operators

Operators for industrial doors



Features

Wide choice of quality products for operating automatic doors

- superior quality
- reliable
- easy to use.

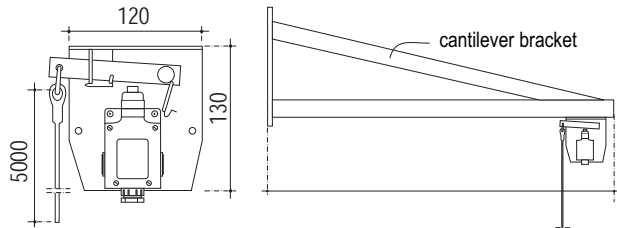
novoferm[®]

Novoferm offers an extensive range of high quality automatic doors.

The operators described below are offered by Novoferm as part of the standard range:

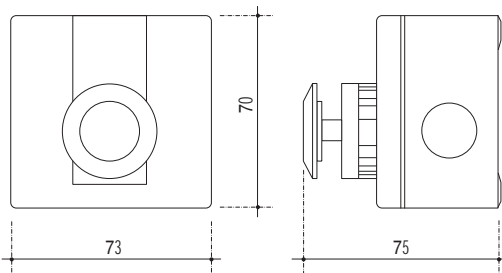
- pull switches
- push-button sets
- photocells
- radar sensors
- induction loop detectors
- remote control systems.

Pull switches



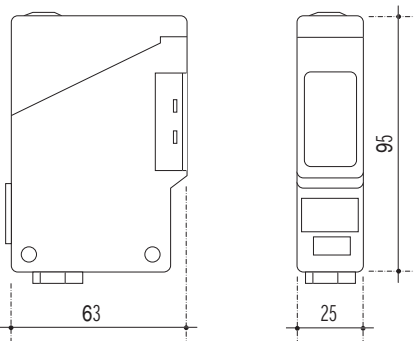
The pull switch is extensively used for forklift truck traffic and allows the driver to operate the switch without dismounting. With a pullcord length of approx. 5 meters, the switch can be installed along approach routes in practically any situation.

Push-button sets



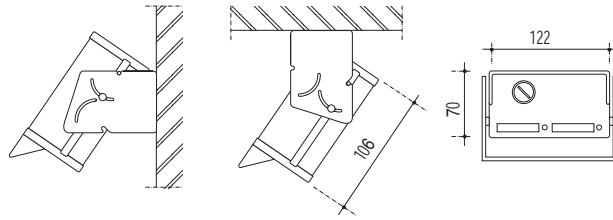
Push-buttons are mainly used for personnel access. The method used to open the door can either be timer-controlled or 'press once to open/press again to close'. Mushroom-head push-buttons are available for situations where personnel passing through the opening may not always have their hands free.

Photocells



The photocell is mainly used as an operator in corridors or interlocked door tunnels. It is more commonly used as a safety device to detect obstructions in an opening. The door will remain open until the photocell beam is no longer obstructed. Reflective designs and transmitter/receiver designs are available.

Radar sensors



wall-mounted

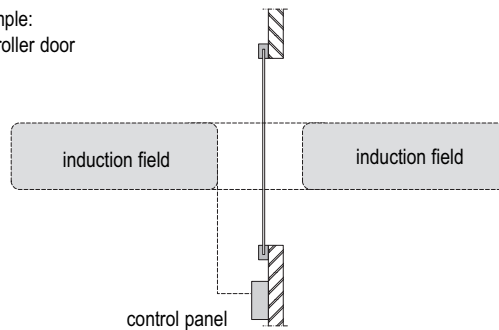
ceiling-mounted

front view

Radar sensors can only detect moving objects. The radar sensors supplied by Novoferm produce a cone-shaped detection field and are direction-sensitive. The size, direction and sensitivity of the radar field are adjustable (for example, so that forklift trucks are detected but pedestrians are not). If an object enters the field and then stops moving, its presence will no longer be detected after a short period and the door will close. A separate safety device is required to prevent this.

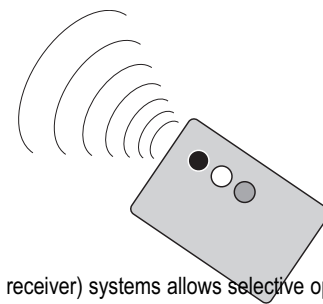
Induction loop detectors

example:
fast roller door



Induction loops are mounted below floor level and create a magnetic field. Metal objects within this field are detected. For this reason, induction loop detection is especially suitable for use as an operator where forklift truck traffic is present. A push-button set can also be fitted if there is also a requirement for pedestrian access, or a separate side door may prove to be an effective solution. Contrary to radar, this system offers permanent detection of stationary objects in the detection area. This characteristic and the system's insensitivity to the effects of weather conditions make it a popular choice (for example, traffic light control).

Remote control



Remote control (transmitter and receiver) systems allows selective operation. Only vehicles and persons equipped with a transmitter can open (or close) a door. Single channel or multi-channel transmitters are also available (for opening or closing different doors).

Accessories / options

Cantilever brackets are available in various sizes and finishes for mounting pull switches, photocells and radar sensors. Heated photocells and radar sensors are available for environments that are subject to extremes of temperature and humidity.